

Tutorial – How to Initialize, Partition and Format a Brand New SSD

Version 1.0

This tutorial will walk you through how to initialize, partition and format a brand new SSD.

Any new drive you purchase unless clearly stated should come completely clean, meaning not formatted, not partitioned, and not even initialized.

*This tutorial is specific to Windows operating systems, it is similar with Mac and Linux.

QUICK GUIDE:

>Right Click Computer > Manage > Disk Manager > Initialize MBR > Right Click choose New Simple Volume > Follow the wizard.

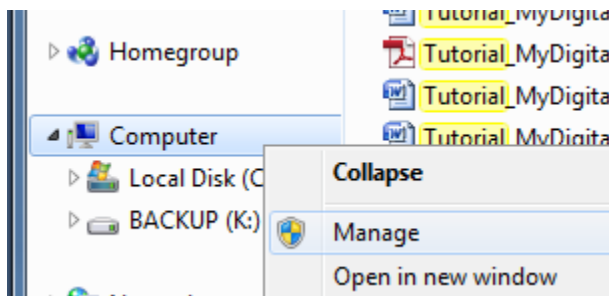
Step 1. Plug in your Drive.

Step 2. Accessing the 'Disk Manager': There are several ways to do this, but for the purpose of this tutorial, we will use the most visual method.

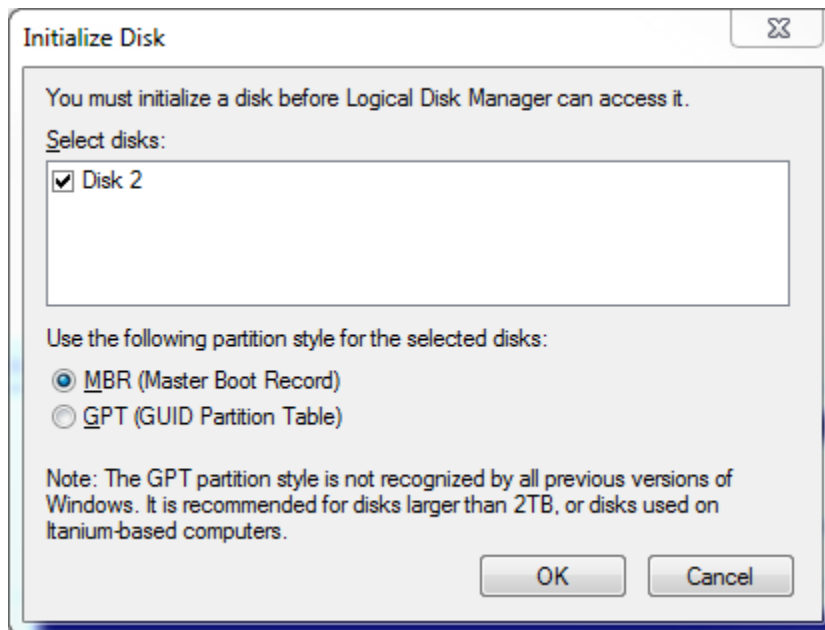
- I. Open a folder:



- II. Right click on 'Computer' or 'This PC' and choose 'Manage' :



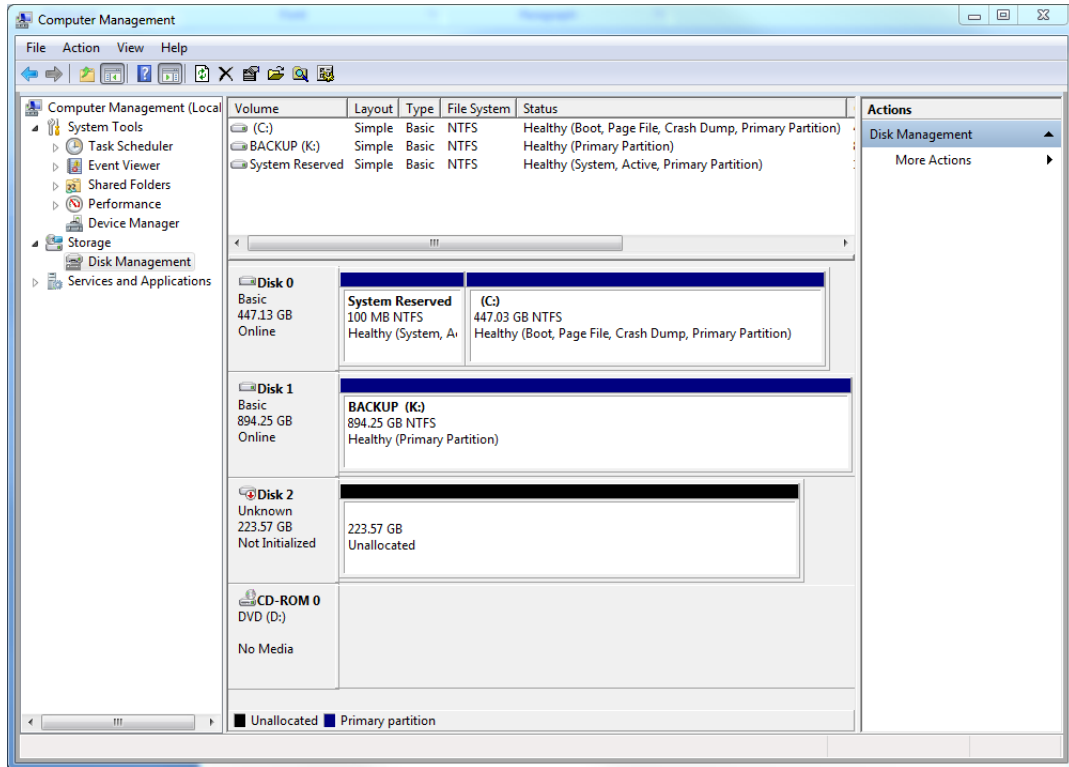
- III. This will bring up the computer management console, click on 'Disk Management' in the left pane. If you installed the drive correctly, you will get a popup stating that you must initialize a disk before you can access it:



Example A

For the purpose of this tutorial, we are going to click 'Cancel.'

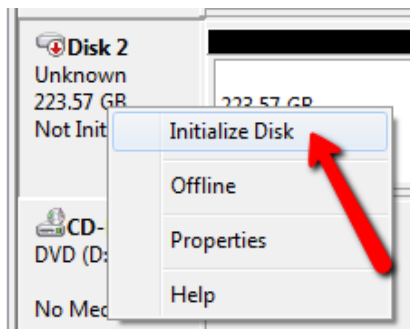
Now we can see the full disk management console:



- IV. As you can see from the photo above, Disk 2 has a red arrow pointing down and the area that would normally contain the drive letter and information about the drive states unallocated.

Step 3. Initialize the drive

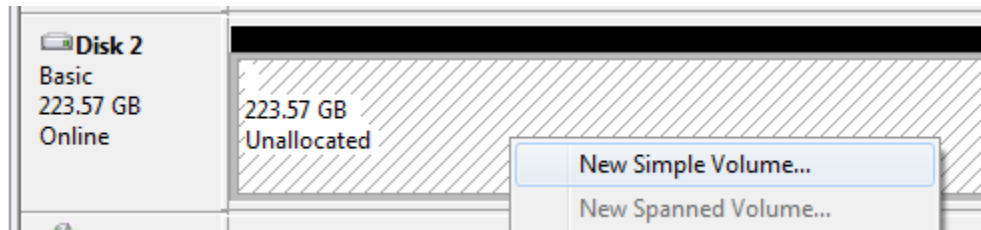
- I. Right click on the area where the red down arrow is located and select 'Initialize Disk' :



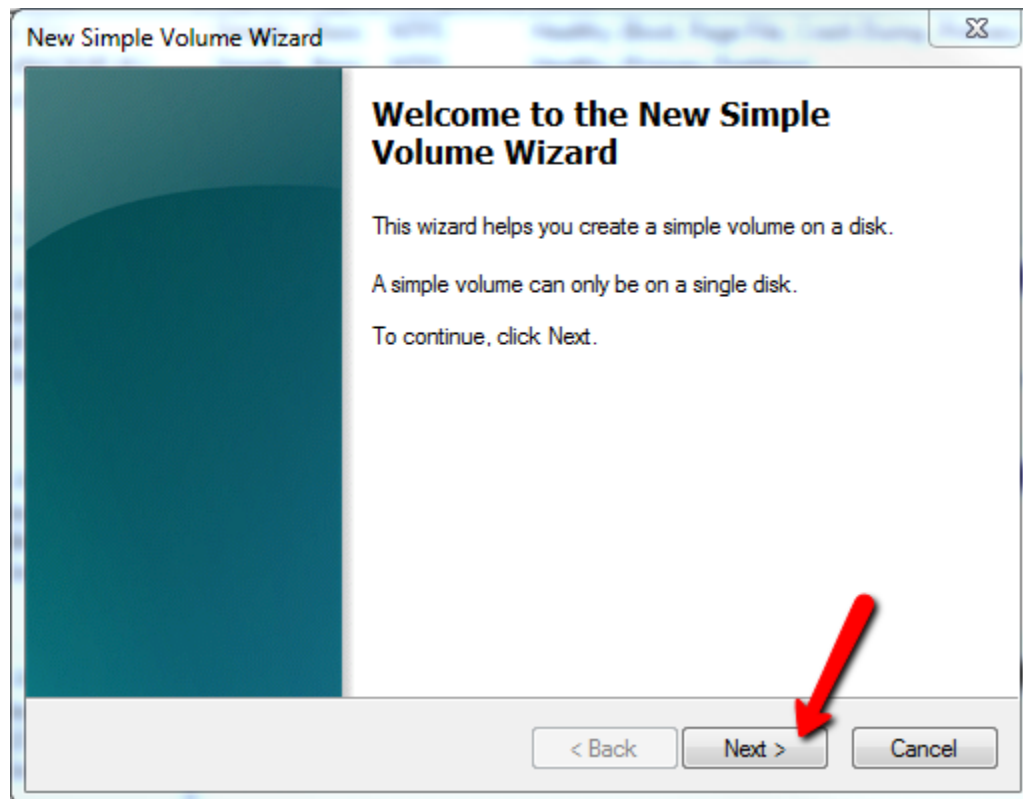
- II. This will bring up the same dialog box we cancelled out of a moment ago, choose whether you want MBR or GPT and click okay. For the purpose of this tutorial, we are going to create a Master Boot Record. See Example A above.

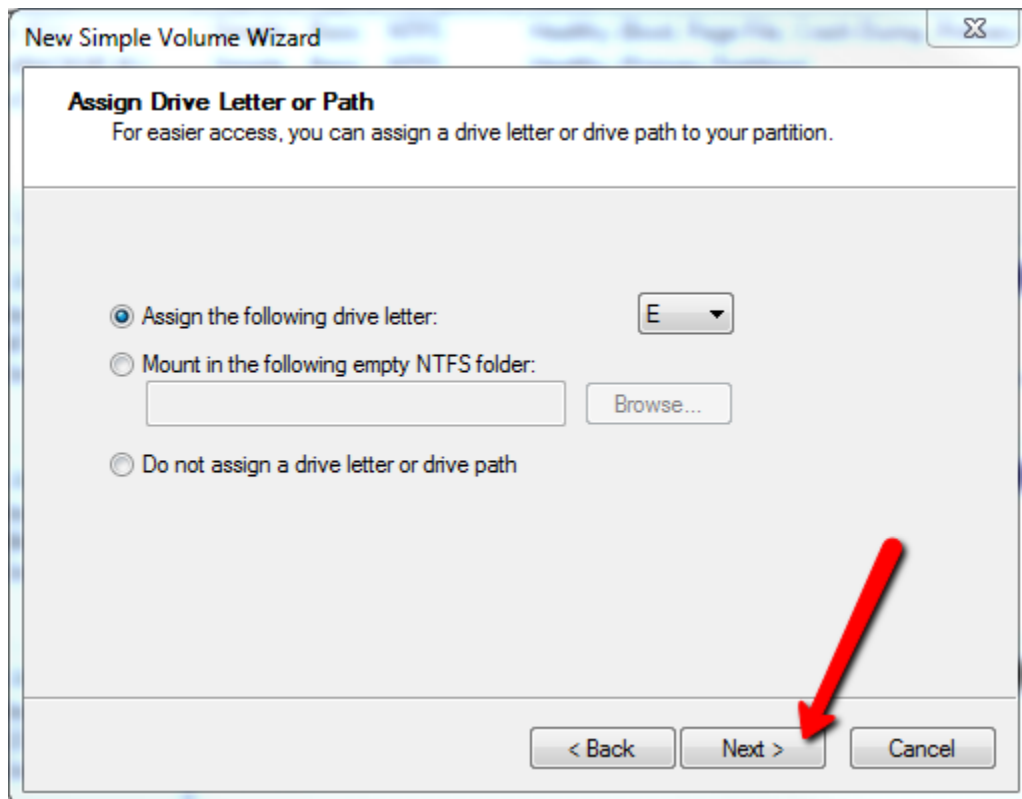
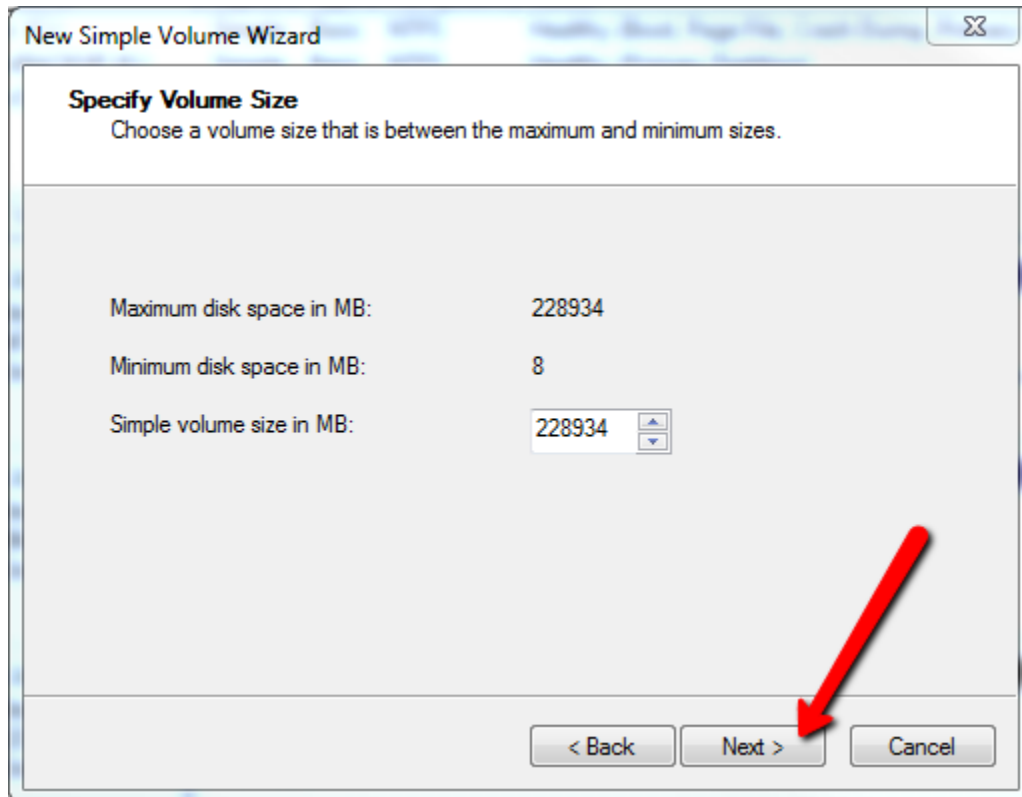
Step 4. Partition the drive

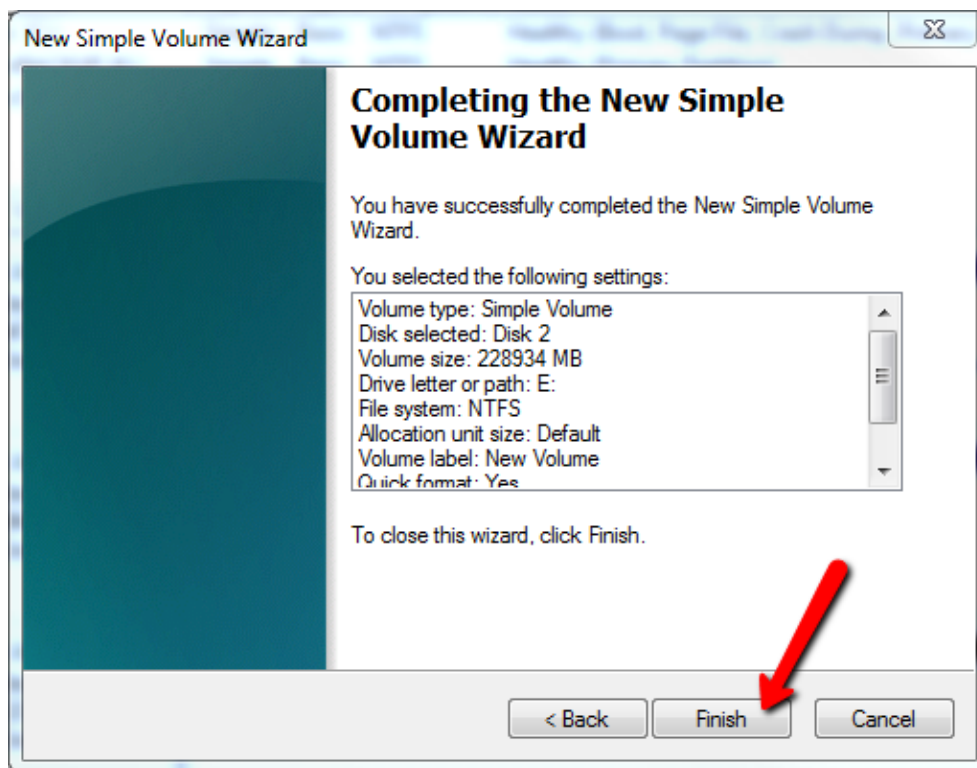
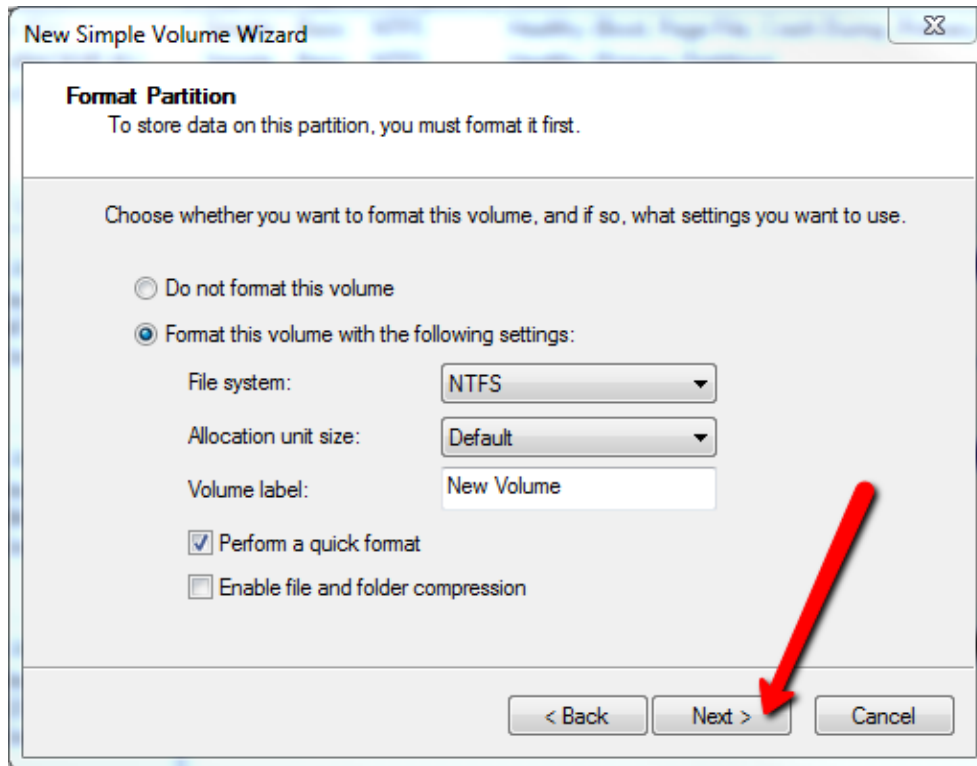
- I. Now that the drive is initialized, you can right click on the unallocated area and create 1 or many partitions.
- II. Right click on the area and choose 'New Simple Volume' :



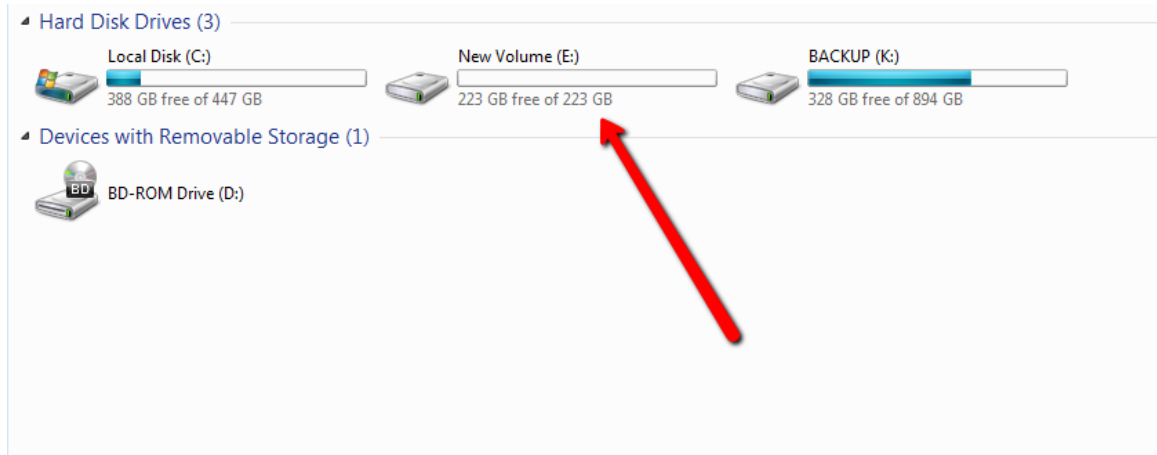
- III. This will bring up a short Wizard that will walk you through the next steps, for the purpose of this tutorial, we are going to leave everything as default which will create 1 full size partition formatted in NTFS and a drive letter will be automatically assigned.







After clicking finish, depending on the size and speed of the drive, it should only take a few seconds to complete, and now, you can see your drive in the computer area and you can use it just like a thumb drive, wherever you plug it in.



Enjoy!